

C A M P D R A K E L A N T E R N

The Cub Scout Leader's Guide to the 2016 Summer Camp Season presents

**MEDIEVAL TIMES!**

This fun-filled event will be your best Cub Camping adventure along the banks of the Salt Fork River. Travel into the outdoor thrills at Camp Drake for the 2016 Cub Scout Adventure Camp. Campers will journey through the program areas in search of action, advancement, and knowledge that we can learn only from the facilities and programs offered at Camp Drake. As an Adventure Camper, Cub Scouts will join in our festive songs and entertainment at mealtimes and participate in games and skits in the evenings. Prepare to enjoy all of the fun at Camp Drake's Cub Scout Adventure Camp!

Please keep in mind that the boys eligible to go this summer are the Scouts who will graduate into the second, third, fourth or fifth grades at the end of this school year in May. Bring this information to the attention of your current Tiger, Wolf, Bear, and Fourth Grade Webelos leaders and parents. The Prairielands Council provides Wolves, Bears and Webelos and their leaders with a safe, educational, and fun-filled camping experience.

This guidebook will provide information for your pack to enjoy Cub Scout Adventure Camp. The fun-filled sessions are planned to entertain Cub Scouts and encourage them in their love for the outdoors. Start planning now for the future second, third, fourth and fifth grade Scouts in your pack to be a part of the ultimate Cub Scout camping experience.

Registration

Welcome to the Camp Robert Drake experience! The Prairielands Council invites you to be a part of the excitement in 2016. Camp Drake will conduct two three-day programs for Wolf, Bear and Webelos Scouts (boys going into second, third, fourth and fifth grades at the end of this school year). Each session begins on an afternoon with check-in starting at 1:00pm. These sessions conclude on the following 3rd morning after a 9:00 am closing ceremony.

The 2016 schedule of camp sessions is as follows:

Blue Session Wed. July 6 thru Sat. July 9

Gold Session Sun. July 24 thru Wed. July 27

To reserve your campsite for the summer, contact the Prairielands Council at (800) 464-7291. A 2016 reservation form can be found in the appendix. In order to secure your reservation, a \$25.00 deposit will hold your place. The \$25.00 deposit is transferable to Scout fees, leader fees, or 2017 site reservation, but is not refundable. Campsites are reserved on a first come-first serve basis.

Sites can be reserved for more than one pack, but each pack must make a deposit to hold their reservation. In fact, depending on Cub Scout Adventure Camp attendance, each campsite may need to be shared. Please contact another pack near your community in order to combine on leadership and a campsite. If you do not have a campsite preference, assignments will be made depending on attendance and availability.

For the 2017 camp season, reservations will be taken from the pack in camp at the end of each session. The 2016 campsite deposit can be transferred to the 2017 camp season only if your pack attends Camp Drake in 2016. No refunds are provided to packs not attending camp.

Individual Youth Registration

The individual fee for the three-day session of Cub Scout Adventure Camp for Cub Scouts from Prairielands Council is \$132.00. For Cub Scouts from other councils, the fee is \$142.00 per boy. Complete the Attendance Registration Form and submit it with your camp payment. An early fee discount of \$5.00 will be available for campers completing their payment before Friday, April 1, 2016.

Total payment for both youth and adult campers for the *Cub Scout Adventure Camp* is due at the Council Service Center, Box 6267, Champaign, IL, 61826, by Friday, April 29, 2016.

Registration payments received after the above dates will be charged an additional \$10.00 late fee per person.

A Health History and Parental Permission form is required for each Scout and Scouter. Copies of the form will be available at the Champaign and Danville Service Centers. Completion of both sections of the form is required for all campers. Please bring these forms to camp and present them to the health officer during check-in procedures. Do not turn the forms in to the Council Service Center.

Adult Leader Fees

As mandated by BSA policy, all packs attending summer camp MUST have at least 2 adults present at all times. One leader must be at least 21 years of age, and all additional leaders must be at least 18 years of age. Adult registration fees are due on the same schedule as the youth fees. The fees for adults who accompany a pack are :

1-5 boys	1 adult free;
additional adult leaders	\$60.00 each
6-10 boys	2 adults free;
additional adult leaders	\$60.00 each
11-20 boys	3 adults free;
additional adult leaders	\$60.00 each
21-30 boys	4 adults free;
additional adult leaders	\$60.00 each

Mandatory Leadership Requirements

In order to insure a positive camping experience, adult leadership is vital to the Cub Scout Adventure Camp. Two leaders must attend for each 8 boys participating at Camp Drake. If your Pack has over 8 Cub Scouts participating, then 3 leaders are required to camp with the group. If the number of Cub Scouts is over 16, then 4 adults must attend. The 2 adults to 8 Scouts ratio is important to provide the necessary guidance to the campers. Your Pack may provide additional support, but the 2 to 8 figure is the minimum allowed. This does not break down to 1 to 4, due to the required two-deep leadership policy.

In addition, age appropriate leaders are required for each grade level. If your Pack is bringing Wolf, Bear, and Webelos Scouts, then three leaders are needed to supervise the daily programs of each den level.

All adult leaders attending camp must bring a current completed medical form. There is a standard form for all participants.

Camperships

Scouts from the Prairielands Council are eligible for partial camperships. Boys that need financial assistance in order to attend camp must have their leader file an application with the Prairielands Council Scout Executive stating the amount of assistance required. All inquiries will be kept confidential. Application forms are available at the Council Service Center.

Camping Arrangements

Packs are able to use the canvas wall tents and cots provided by Camp Drake OR bring their own type of tents. Whatever the gear, each pack is responsible for assigning sleeping arrangements, keeping in mind that no youth is permitted to sleep in the tent of an adult other than his own parent or guardian.

CAMP REFUND POLICY

The Council Camping Committee has established the refund policy for summer camp programs at Camp Robert Drake. Any refund desired must use the **Camp Refund Request** form to be presented in writing to the Council Scout Executive. A sliding scale has been developed depending on the length of time in which the Council Service Center is notified prior to the camp session. If the request is received 30 days prior to the camp session, a full refund will be considered; if received 21 days prior, a 75% refund considered; if received 14 days prior, 50% will be considered if received 7 days prior, 25% will be considered. All refunds will be made on or before August 30. All camper fees are transferable to other Cub Scouts or to another camp session so parents are encouraged to work out the details within their own unit.



Camp Address and Phone

Each campsite has a mailbox for mail and phone messages. This mailbox is located in the Trading Post and is available during regular Trading Post hours. The camp address is:

Scout's Name Pack Number
Camp Robert Drake
10001 E 1500 N. Road
Fairmount, IL 61841



The camp phone number is 217-427-5243. Be prepared to leave a message. The camp fax number is (217) 427-2111. Messages will be placed in the pack mailbox. Any camp e-mail can be sent to Director Mike Graham at mike.graham@Scouting.org prior to June 1. His summer camp e-mail address is mykegr@gmail.org Check out Camp Drake on the Internet at www.campdrake.com The Prairielands Council address is P.O. Box 6267, Champaign, IL 61826-6267 The Prairielands Council phone number is (800) 464-7291.

Facilities

Dining Hall

Camp Drake uses a central dining hall for all meals. Meals are prepared and provided by the kitchen staff. Please notify the Camp Director of any special dietary needs in your pack prior to your arrival at camp. Campers will be assigned tables and will help clean their own space. Breakfast at camp is at 8:00am, lunch at 12:15pm and dinner at 5:30pm. The Dining Hall is also used for the first day orientation to provide details for adult leaders.

Health/First Aid Room

The First Aid room is well-equipped and staffed by a Health Officer at all times. All illness and injuries requiring additional attention will be taken to the United Samaritan Medical Center in Danville. Should anyone should require hospitalization or major medical care, a parent or spouse will be notified. All prescription medication is kept in the First Aid Room and distributed by the Health Officer. This applies to both youth and adults.

Campfire Arena

Excellent seating for up to 600 viewers is in place at the campfire arena. Evening shows at the arena provide entertainment for the opening and closing programs. The arena is equipped with a quality sound system, lighting, slide show capabilities, and a scenic outdoor stage.

Chapel

On a secluded ridge on the east side of camp, the chapel hosts any religious services conducted in camp. Packs are invited to conduct their own religious program, or join in the religious services.

Trading Post

Refreshments, candy, handicraft projects, camping equipment, and souvenirs are available at the Trading Post. Hours of operation will be posted outside the store. The Trading Post will be open daily and after evening programs until 10:00pm.

Friendship Circle

Located in the center of camp, the Friendship Circle is an outdoor gathering place for social activities, camp meetings, or simple relaxation. Adirondack chairs provide comfortable seating for campers.

Swimming Pool and Showerhouse

The Keith Hutson Showerhouse is divided into four shower areas. Area One is designated for campers 17 and younger; Area Two is for men 18 and older; Area Three is for women; and Area Four is for camp staff 17 and under. The swimming pool is adjacent to the showerhouse and divided into three swimming sections - swimmer, beginner, learner .

Campsites

All campsites are equipped with a latrine, washstand, and bulletin board. The 6 foot by 9 foot tents with cots will be set up. Suggested pack equipment includes dining flies, flags, lanterns, and woods tools. Your campsite is your home during your camp visit. Your pack is responsible for the cleanliness and attractiveness of your campsite. Your pack will be held responsible for any damage to the site or equipment. If you choose to bring your own tents, please contact the camp director.

NOTE: According to the Guide to Safe Scouting, no youth is permitted to sleep in the tent of an adult other than his own parent or guardian.

Campsite	Min	Max
Curved Oak	15	50
Locust Bend	10	40
Tall Pine	15	40
Dogwood	10	30
Choctaw Ridge	5	20
Whippoorwill	15	50
Pioneer	15	60
Scouter's Point	15	50
Tulip Point	5	20

If your pack does not fill the maximum capacity of the campsite you request, an additional pack may be assigned to share the campsite with you.

Program Areas

In the program areas at Camp Drake, opportunities are provided for basic and advanced instruction in a variety of outdoor skills. In each of these areas, qualified and trained staff members specialize in activity badge counseling and running fun activities. All campers are encouraged to enjoy the learning atmosphere in the program areas.

Ecology

On the trail to Poncho Pond is the ecology area, which offers the ideal opportunity for Scouts to discover the great outdoors. From its scenic location overlooking the river, the ecology staff organizes conservation events and nature studies. Interested Scouts can also complete the requirements for the World Conservation Award.

Poncho Pond

Boating and fishing activities take place at Poncho Pond, located at the northern edge of camp. The pond is part of the Pollywogs, a larger group of lakes in the area. The Pollywogs are known for their fishing areas. Camp Drake provides canoes, kayaks, and rowboats for wave-riding fun. Campers must have a swimmer level ability to go boating.

Shooting Sports

The Shooting Sports area allows campers to sharpen their marksmanship and learn proper handling techniques for firearms and bows. Safety is very important in this area, and the B-B guns and archery ranges are operated by BSA certified staff members. Opportunities include working on B-B gun and archery sports belt loops.

Handicraft

Develop your creative talents in the handicraft area. Counselors provide guidance to build and paint useful items to enhance your campsite. Visit the Handicraft area in the Marion Sadorus shelter, next to the pool, to make great crafts to take home.

Pool

Dive into all the exciting events at the swimming pool. The aquatics staff provides an instructional swim for Scouts needing assistance with their swimming skills. In the hot sun, free swims are open for packs to cool down.

Scoutcraft

In the Jack Bigger shelter, the Scoutcraft area is where camping skills are highlighted. Counselors guide Scouts on proper use of woods tools for Whittlin' Chip cards.

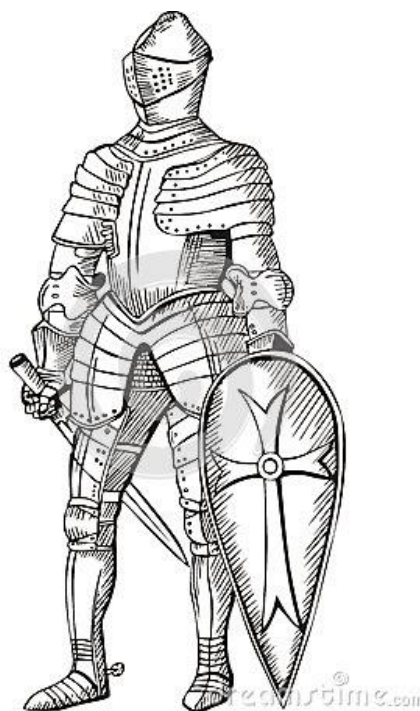
Sports Center

In the spirit of teamwork, the Sports Center allows Scouts to explore their physical fitness. A wide variety of sports belt loops options are open to enjoy. Each afternoon, pack and individual sports activities, such as volleyball, soccer, and ultimate frisbee, will be organized for energetic campers.

Advancement

World Conservation Award

Contact the Ecology Director if you have Scouts interested in achieving this award. Wolf, Bear, and Webelos Scouts have different requirements to complete to earn the World Conservation Award.



Arrow of Light Requirements

If you have Webelos Scouts looking to complete requirements for the Arrow of Light and have fun at the same time then current fourth graders will have a special option to work on the highest award in Cub Scouting.

Additional Programs

Campfire Programs

Two evening campfire programs will provide entertainment for Scouts, leaders, and visitors. On the first night, the Camp Drake Staff will welcome all campers with the opening campfire. Skits and stunts will preview the upcoming activities. Family and friends are invited to enjoy the closing evening campfire. Share in Scouting fellowship with songs and stories at an impressive and inspiring campfire. To end the session, the closing campfire allows Scouts to participate with their own pack in skits and stunts. Campfires are encouraged in the campsites each evening to roast marshmallows and reflect upon the days events.

Sports Programs

Throughout the week, Scouts can participate in arranged sports programs and tournaments. The sand volleyball court has been a favorite spot for campers and leaders for several years. Other opportunities include tetherball, basketball, badminton, dodgeball, and ultimate Frisbee.

Religious Services

A non-denominational religious service each afternoon is open to all Scouts and leaders. Please encourage your Scouts to attend. The chapel, located off the trail behind the Scoutcraft area, is available throughout the week for your pack or individual use as well.

Onaquispasippi Trail

Hike throughout the boundaries of camp along the Onaquispasippi Trail. The trail follows the perimeter of the camp property and takes campers to little used areas in the wilderness. Discover the historic landmarks, the hidden valleys, and the scenic views along the way. The Onaquispasippi can be hiked in segments or all at once in a long afternoon. Pick up a special trail patch once you've completed your journey. While you're at the trading post getting the trail patch, don't forget to check out the requirements for the Onaquispasippi Trail medal.

Camp Candy Sale

Each spring, the Prairielands Council organizes a Candy Bar sale to help Cub Scouts earn money for camp. The Council Candy Sale will run throughout March. A portion of the sale is used on the council level to support year-round maintenance of camping properties. By participating in the Council Candy Sale, your Pack raises funds for Scouts and for the camp.

Health and Safety

1. In accordance with Boy Scouts of America policy, only registered Cub Scouts are eligible to participate as youth at camp. Non-Cub Scout youth are able to visit, but cannot stay overnight.
2. No one may leave camp property without permission. Leaders and parents must inform the Camp Director when they plan to be absent and must secure alternate supervision for their campsite in their absence. All Scouts and leaders are required to sign in and out at the camp office.
3. Proper instruction should precede the handling of any axe, knife, or saw. Request help from the camp staff.
4. NO SWIMMING is allowed in the Salt Fork River. No unsupervised swimming is allowed in the pool.
5. All accidents and illness should be reported to the health officer immediately. Accidents not involving injury should be reported to the Camp Director or appropriate staff member.
6. Campers must stay on all designated trails throughout camp. All ravines are off limits.
7. Shoes must be worn at all times, unless swimming or sleeping.
8. NO FIREWORKS. Individuals possessing or using fireworks will be dismissed from camp.
9. NO ALCOHOL is permitted on camp property.
10. No pets are allowed in camp.
11. *It is the policy of the BSA that leaders should not use tobacco products in any form in the presence of youth members.* All camp buildings are smoke-free environments for all Scouting participants.
12. Taps will be played at 10:00pm and all Scouts are required to be in their campsite at this time. Packs should respect neighboring campsites in the evening with quiet hours.
13. No liquid fuels may be used or stored at the campsites for fire-starting. Liquid fuel appliances may be used only by adults or under adult supervision. Unused equipment and fuel should not be stored in the campsite. If you need to store additional fuel or equipment, please make arrangements with the Camp Commissioner.

Policies

Nondiscrimination

Camp Robert Drake will be open to all Scouts regardless of race, color, religion, handicap, or national origin.

Medicals

The national Boy Scouts of America camp policy mandate medical examinations. Campers and adult leaders must present evidence of an annual physical examination by a licensed physician, physician's assistant, or nurse practitioner AND a health history completed by a parent.

All campers and adults will receive a medical re-check upon arrival at camp. All physicals and health histories must be on file with the camp health officer in case of emergency. Do not turn forms in to the Scout service center. They must be brought out to camp. At the end of camp, it is the responsibility of the pack leader to pick up all medical forms and medicine prior to check-out.

Youth MUST BRING a physical form which will be distributed upon request throughout the Prairielands Council.

All adult leaders attending camp MUST BRING a current completed BSA physical form.

Visitors

Parents, friends, and relatives are invited to visit program areas while camp is in session. All visitors must check in at the camp office. Meals are available for \$5.00 each, pending available space. Meal tickets may be bought at the trading post.

Priceless Memories From Camp Drake

Campers can take memories from camp home with them on the Camp Drake picture CD. These are available in the trading post on the final morning of camp. They can be pre-ordered at any time during the session and will feature all the pictures taken by the camp staff

Waterfront Safety

Camp Drake adheres to the BSA Safe Swim Defense Plan. Upon arrival at camp, everyone must take a swim test. Campers and leaders will be placed into one of three ability groups. The ability groups will be used to determine a boy's eligibility to participate in certain aquatics activities. The pool and pond both use the Buddy System. Remember to check in and out of the swimming and boating areas.

Uniform

Scouts are encouraged to wear their official uniform at camp. The 'Official' uniform is to be worn at the evening flag ceremony and meal. During all other times Scouts should wear a camping or other Scouting T-shirt and suitable shorts or long pants.

Parking Area

All vehicles driven to camp are to be parked in the designated parking area. In order to maintain a good camping atmosphere, only authorized vehicles will be permitted outside the parking area. Heavy equipment may be transported to and from your campsite by camp staff personnel.





Camp Robert Drake Campsite Reservation Form

2016

Pack Number _____ City _____

- Blue Session July 6 to July 9
- Gold Session July 24 to July 27

Campsite Preference _____
 Second Choice Campsite _____
 We will attend camp with approximately _____ scouts.

Name _____ Home Ph _____
 Address _____ Work Ph _____
 City _____ State _____ Zip _____



Camp Robert Drake Campsite Reservation Form

2017

Pack Number _____ City _____

- Blue Session
- Gold Session

Campsite Preference _____
 Second Choice Campsite _____
 We will attend camp with approximately _____ scouts.

Name _____ Home Ph _____
 Address _____ Work Ph _____
 City _____ State _____ Zip _____